

## Identification of Egr1 Direct Target Genes in the Uterus by *In Silico* Analyses with Expression Profiles from mRNA Microarray Data

Bong-jong Seo<sup>1</sup>, Ji Won Son<sup>1</sup>, Hye-Ryun Kim<sup>1</sup>, †Seok-Ho Hong<sup>2</sup>, and Haengseok Song<sup>1</sup>

<sup>1</sup>Department of Biomedical Science, CHA University, Seoul 135-081, Republic of Korea

<sup>2</sup>Department of Internal Medicine, School of Medicine, Kangwon National University, Chuncheon 200-701, Republic of Korea

**ABSTRACT :** Early growth response 1 (Egr1) is a zinc-finger transcription factor to direct second-wave gene expression leading to cell growth, differentiation and/or apoptosis. While it is well-known that Egr1 controls transcription of an array of targets in various cell types, downstream target gene(s) whose transcription is regulated by Egr1 in the uterus has not been identified yet. Thus, we have tried to identify a list of potential target genes of Egr1 in the uterus by performing multi-step *in silico* promoter analyses. Analyses of mRNA microarray data provided a cohort of genes (102 genes) which were differentially expressed (DEGs) in the uterus between Egr1(+/+) and Egr1(-/-) mice. In mice, the frequency of putative EGR1 binding sites (EBS) in the promoter of DEGs is significantly higher than that of randomly selected non-DEGs, although it is not correlated with expression levels of DEGs. Furthermore, EBS are considerably enriched within -500 bp of DEG's promoters. Comparative analyses for EBS of DEGs with the promoters of other species provided power to distinguish DEGs with higher probability as EGR1 direct target genes. Eleven EBS in the promoters of 9 genes among analyzed DEGs are conserved between various species including human. In conclusion, this study provides evidence that analyses of mRNA expression profiles followed by two-step *in silico* analyses could provide a list of putative Egr1 direct target genes in the uterus where any known direct target genes are yet reported for further functional studies.

**Key words :** Egr1, Uterus, Microarray, *In silico* analysis, Identification of direct target genes

### INTRODUCTION

Early growth response-1 (Egr1), also known as Krox-24, NGFI-A, and Zif268, is a zinc finger transcription factor that was identified as an immediate-early serum response gene expressed in various physiological conditions (Milbrandt, 1987; Topilko et al., 1998). Egr1 belongs to Egr family of transcription factors encoding closely related transcription factors (Patwardhan et al., 1991). It is rapidly induced by

various stimuli such as growth factors and cytokines. It can be expressed through activation of the protein kinase C and mitogen-activated protein kinase pathways (Gashler and Sukhatme, 1995). These pathways are activated by gonadotropin releasing hormone (GnRH) in gonadotropes (Sundaresan et al., 1996; Reiss et al., 1997; Saunders et al., 1998).

Two independent Egr1 knock-out mice with overlapped and distinct phenotypes have been produced (Lee et al., 1996; Topilko et al., 1998). Two different cell lineages

---

Manuscript received 1 January 2014, Received in revised form 21 January 2014, Accepted 1 February 2014

† Corresponding Author : Seok-Ho Hong, Department of Internal Medicine, School of Medicine, Kangwon National University, Chuncheon 200-701, Republic of Korea. Tel. : +82-33-250-7819, Fax : +82-33-244-2367, E-mail : shhong@kangwon.ac.kr

This is an Open Access article distributed under the terms of the Creative Commons Attribution Non-Commercial License (<http://creativecommons.org/licenses/by-nc/3.0>) which permits unrestricted non-commercial use, distribution, and reproduction in any medium, provided the original work is properly cited.

expressing *Egr1* in the pituitary are differentially affected by the mutation. Somatotropes present abnormal cytological features and are reduced in number, consistent with the decreased level of growth hormone observed in these animals. In contrast, gonadotropes are normal in number, but fail to synthesize the  $\beta$ -subunit of luteinizing hormone (LH $\beta$ ). In the ovary, expression of LH receptor is down-regulated, indicating that *Egr1* could act at two different levels of the pituitary-gonadal axis (Duan et al., 2002; Yoshino et al., 2002). While it is now clear that *Egr1* is a critical transcription factor to regulate LH $\beta$  transcription in the pituitary, its function and target genes in other reproductive organs such as uterus have not been thoroughly investigated.

*Egr1* acts as tumor suppressor by trans-activating major tumor suppressors, including transforming growth factor- $\beta$ 1, p53, and PTEN, indicating that *Egr1* is a major tumor suppressor in numerous human cancers (Baron et al., 2006). For example, *Egr1* expression is suppressed in non-small cell lung cancers and glioblastomas. Over-expression of *Egr1* by recombinant adenovirus infection almost completely prevents the growth of tumor cells *in vitro*, regardless of the mutation of the p53 gene in breast cancer and small cell lung carcinoma (Calogero et al., 2004). *Egr1* regulates transcription of heparanase in tumor cells by either repressing or activating transcription depending on types of cancers (de Mestre et al., 2005). Furthermore, *Egr1* is induced by estrogen via ERK1/2-dependent activation of ELK-1 in MCF-7 breast cancer cells (Chen et al., 2004). However, the function and expression profiles of *Egr1* have not been investigated in the uterus, a major target tissue of estrogen. Thus, it is critical to identify target genes whose transcription is directly regulated by *Egr1* in the uterus for understanding function and estrogen-dependent regulation of *Egr1* in the uterus. Here we suggest that multi-step *in silico* analyses with mRNA microarray data could be a useful tool to provide a list of genes with higher

probability to be direct target genes of a transcription factor for further functional studies.

## MATERIALS & METHODS

### 1. Identification of differentially expressed genes (DEGs) by SAM

All mice used in this study were housed in the Animal Care Facility at the Gangnam CHA Medical Center, CHA University, according to institutional guidelines for laboratory animals. This study was approved by the Institutional Animal Care and Use Committee (IACUC, approval number 110005). *Egr1* knockout mice were originally produced and kindly provided by Jeffrey Milbrandt at Washington University at St. Louis, MO, USA (Lee et al., 1996). Six to seven week-old *Egr1*(+/+) and *Egr1* (-/-) female mice were ovariectomized (OVX), rested for 2 weeks, and then treated with 200 ng estrogen (17 $\beta$ -estradiol, E<sub>2</sub>). Mice were sacrificed 3 h after E<sub>2</sub> treatment and uterine tissues were collected for RNA preparation. Total RNA from each mouse was individually prepared and two RNA samples were pooled for each microarray. mRNA microarrays were performed with Illumina Mouse WG-6 V2 (48K) array (Illumina; San Diego, CA, USA). Microarrays were performed as triplicates for each genotype (n=6 mice per genotype). Significant Analyses of Microarray (SAM) was applied to select DEGs between *Egr1*(+/+) and *Egr1*(-/-) uteri after E<sub>2</sub> treatment.

### 2. *In silico* promoter analyses of DEGs

The promoter sequences of DEGs from -2000 to +200 [a reference point (zero) was transcription start site] were obtained from UCSC gene sorter (<http://www.genome.ucsc.edu>). MatInspector (<http://www.genomatix.de>) was applied to mouse promoter sequences to identify putative EBSs in the promoter regions of DEGs (Cartharius et al., 2005). Three most representative EBSs provided by MatBase

in genomatrix were utilized to identify putative EBS in promoter regions. All the promoter sequences from seven species, including mouse, rat, human, rhesus monkey, orangutan, horse and dog, were applied to Promo (<http://algggen.lsi.upc.es>) for analyzing sequence conservation of EBS among different species (Messegueur et al., 2002).

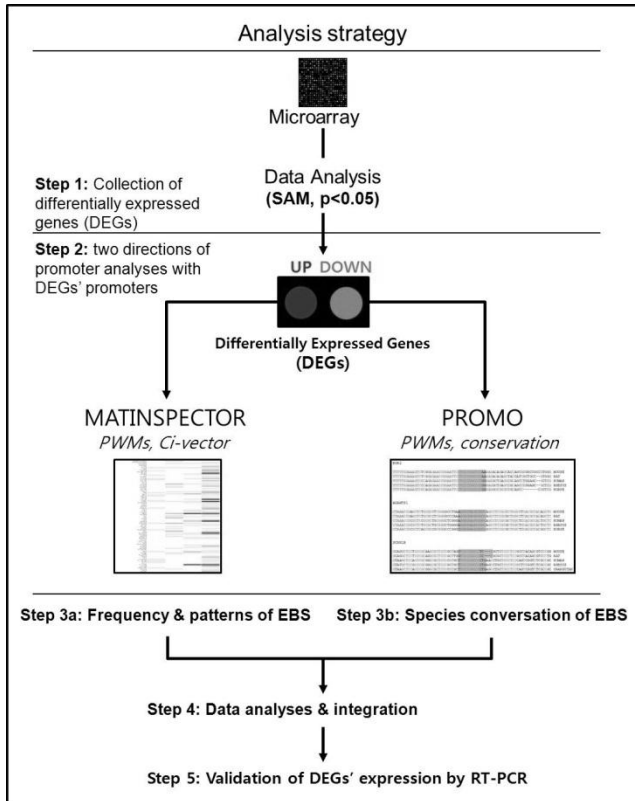
### 3. Reverse Transcription-PCR (RT-PCR) and real-time RT-PCR

Total RNA was extracted from uteri of OVX Egr1(+/+) and Egr1(-/-) mice 3 h after estrogen treatment (200 ng/mouse) by using Trizol reagent (Ambion, Carlsbad, CA, USA) according to manufacturer's protocols. The first-strand cDNA was synthesized from 2 µg of total RNA by

using M-MLV reverse transcriptase and RNasin Ribonuclease inhibitor. For RT-PCR and real-time RT-PCR analyses, gene-specific primers were used as described in Table 1. The PCR conditions for all primers were as follows: hold for 10 min at 95°C, followed by each cycles which were determined by primer test consisting of denaturation at 95°C (30 sec), annealing at 60°C (30 sec), elongation at 72°C (1 min). The amplified products were subjected to electrophoresis on a 2% agarose gel. Real-time RT-PCR was performed using Real-time PCR detection system (Bio-Rad, Waltham, MA, USA) and iQ™ SYBR Green supermix (Bio-Rad). For comparison of transcript levels between samples, a standard curve of cycle thresholds for several serial dilutions of a cDNA sample was established

**Table 1. Sequences of oligonucleotide primers used in microarray data validation, and expected PCR product sizes**

Gene	Direction	Primer sequence	Cycle	Product size (bp)
Kit	F	5'- GGC CTC ACG AGT TCT ATT TAC G -3'	28	168
	R	5'- GGG GAG AGA TTT CCC ATC ACA C -3'		
Frmd6	F	5'- CAA AGC CAT GCA GGA CCG T -3'	28	274
	R	5'- GAT GCC CCA AGT GAC TTC GT -3'		
Plat	F	5'- AAC GCA GAC AAC TTA CCA ACA -3'	28	131
	R	5'- GTT CGC TGC AAC TTC GGA C -3'		
Lbh	F	5'- CTG CTC TGA CTA TCT GAG ATC GG -3'	28	141
	R	5'- CAG CAA CGG TCA AAG TCT GAT -3'		
Egr2	F	5'- TTT GAC CAG ATG AAC GGA GTG G -3'	30	140
	R	5'- CCC ATG TAA GTG AAG GTC TGG TTT -3'		
Adamts1	F	5'- GCT CTC TGT CCG CAC ACA T -3'	30	63
	R	5'- GCG CAC ATA GCA GCA TTG TT -3'		
Scnn1b	F	5'- GGC CCA GGC TAC ACC TAC A -3'	28	125
	R	5'- AGC AGC GTA AGC AGG AAC C -3'		
Bcl7a	F	5'- TGG ACA TGC ACG ATG ATA ACA G -3'	28	175
	R	5'- GCT CCA GGG TGC TCT TTT CC -3'		
Gadd45g	F	5'- AAA GTC CTG AAT GTG GAC CCT -3'	22	110
	R	5'- AAC GCC TGA ATC AAC GTG AAA -3'		
rPL7	F	5'- TCA ATG GAG TAA GCC CAA AG -3'	22	246
	R	5'- CAA GAG ACC GAG CAA TCA AG -3'		



**Fig. 1. A schematic diagram to summarize experimental procedures to identify direct target genes of *Egr1* in the uterus.** Experiments were initiated with a set of DEGs between uteri of OVX *Egr1*(+/+) and *Egr1*(-/-) mice 3 h after  $E_2$  treatment. DEGs were identified by significant analyses of microarray (SAM). Two different bioinformatics tools were applied to analyze proximal region (~2kb) of promoters of DEGs. Expression of DEGs whose promoter region has EBSs with higher sequence conservation between species was validated by RT-PCR and real-time RT-PCR.

and then used to calculate the relative abundance of each gene as previously described (Svaren et al., 2000). Values were then normalized to the relative amounts of rPL7 cDNA. All PCR reactions were performed in duplicate.

#### 4. Statistical analyses

All values represent the mean±standard error (SE). Student *t*-test or Fisher's exact test was performed to evaluate

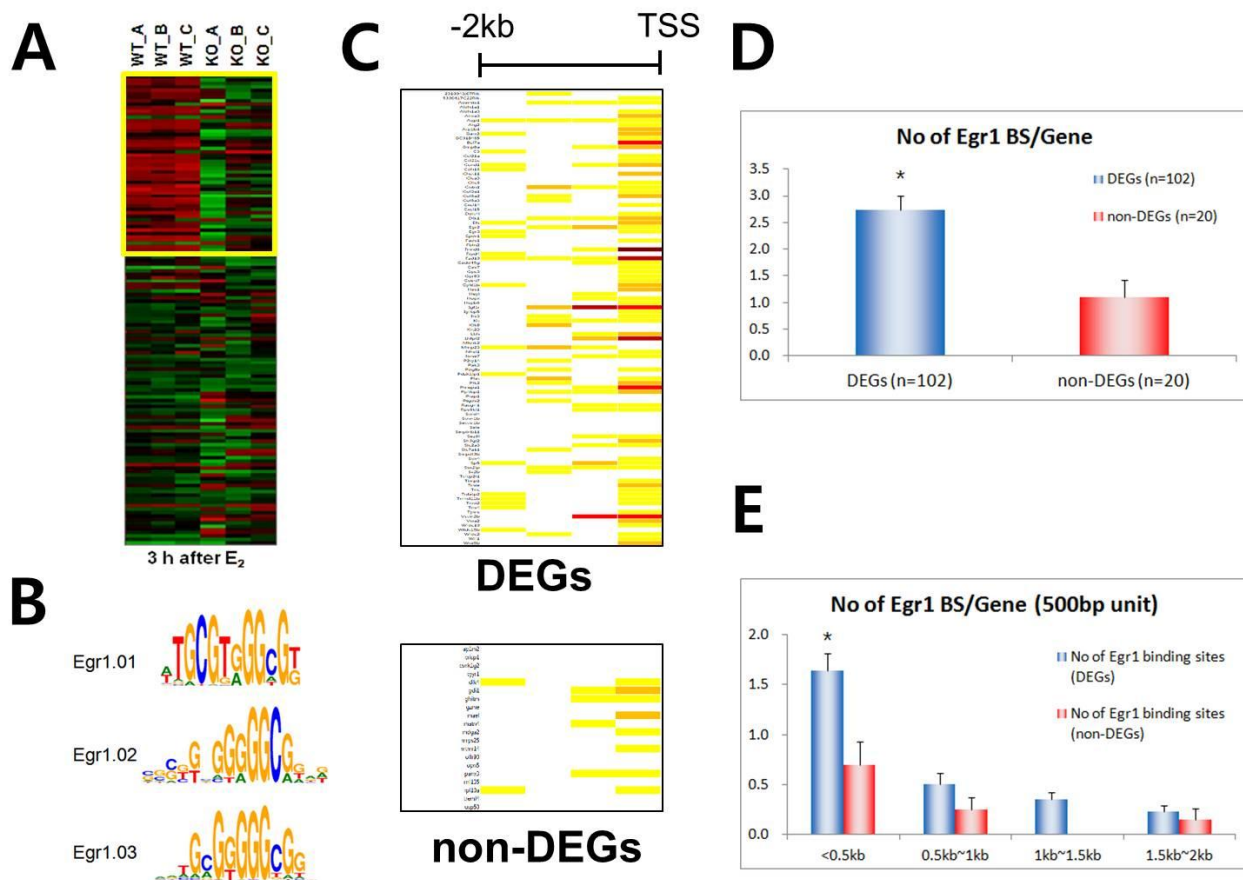
statistical significance.  $p < 0.05$  was considered statistically significant.

## RESULTS

### 1. *In silico* promoter analyses to identify *EGR1* binding sites (EBS) in promoters of DEGs 3 h after $E_2$ treatment in uteri of *Egr1*(-/-) mice

We have recently showed that *Egr1* is rapidly and transiently induced by  $E_2$  and its expression reached maximal levels at 2 h after treatment in ovariectomized female mice (Kim et al., submitted). To identify direct target genes of *Egr1* in the uterus, we have compared mRNA expression profiles in the uterus between wildtype and *Egr1*(-/-) mice 3 h after  $E_2$  treatment. SAM analysis at 1.5 fold change with statistical significance ( $p < 0.05$ ) provided 102 DEGs which are either up- or down-regulated in *Egr1*(-/-) uteri (Fig. 2A). The most representative sequences of EBS (Fig. 2B) were used to analyze promoter regions of DEGs. Promoter sequence analyses with MatInspector for proximal promoter regions of DEGs (~2kb) showed that the number of EBS is quite different between DEGs. The number of EBS is represented as a heat map with a color spectrum from yellow (a few) to dark red color (many binding sites) (Fig. 2C). Whereas 87 of 102 DEGs have putative EBS in their promoter region (85.3%), 9 out of 20 randomly selected non-DEGs have them (45%). These results suggest that EBS are significantly enriched in the promoters of DEGs than in those of non-DEGs ( $p < 0.001$ ).

Whereas there are  $2.7 \pm 0.26$  EBSs within ~2.0kb promoter regions of 102 DEGs, there are  $1.1 \pm 0.32$  in those of randomly selected non-DEGs ( $p < 0.001$ ), suggesting that the number of EBS is significantly enriched in the promoter regions of DEGs (Fig. 2D). In addition, ~60% EBS (179/298) of both DEGs and non-DEGs EBS are located within -0.5kb region of their promoters. Furthermore, the average number of EBS in -500 bp of DEG promoters



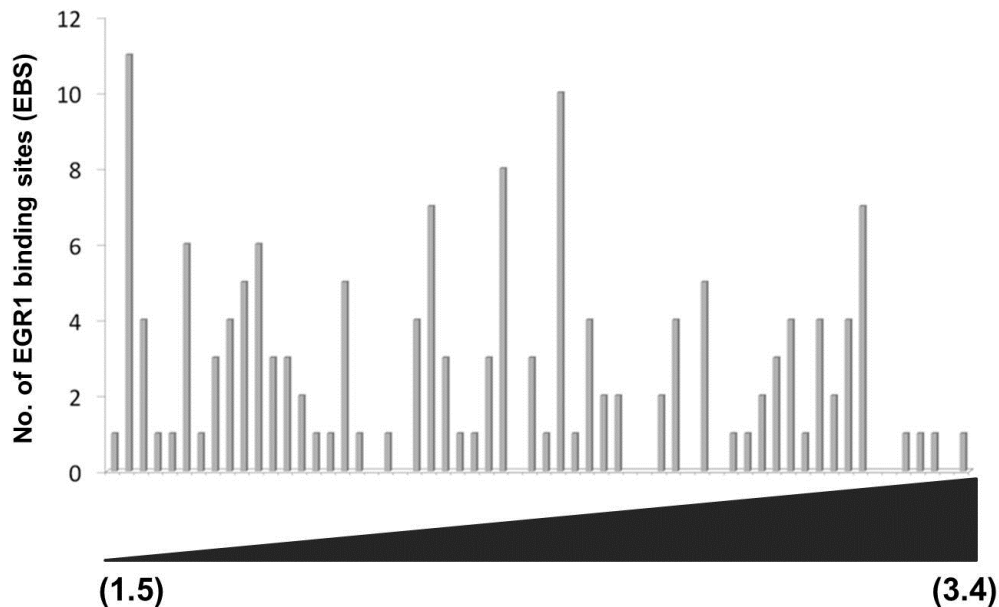
**Fig. 2. Promoter analyses of putative Egr1 target genes in the uterus.** (A) A heatmap of DEGs between uteri of OVX Egr1(+/+) and Egr1(-/-) mice 3h after E<sub>2</sub> treatment (genes within yellow box). Promoter regions of DEGs with >1.5 fold change values as putative Egr1 direct target genes were analyzed by MatInspector. (B) The most representative sequences of EBSs visualized by MatBase. The height of each nucleotide corresponds to its frequency of occurrence at the given position. (C) Heatmaps for frequencies of EBSs in promoter regions of DEGs (putative Egr1 direct target genes) and randomly selected non-DEGs (negative control). The frequency of EBS was analyzed by MatInspector. Each column in heatmaps represents 500 bp unit from -2kb to transcription start site (TSS) in their promoters. Color spectrum indicates the frequency of EBSs from yellow to dark red (1~2; yellow, 3~4; orange, 5~6; red, 7~8; wine, 9~10; dark red). (D-E) Enrichment of EBSs in -2kb promoter regions of DEGs compared to those of non-DEGs, especially in -500 bp from TSS. Error bars represent standard deviation.

is significantly higher than that of non-DEG ( $p < 0.01$ ), suggesting that -500 bp promoter is the critical region for EGR1 to regulate transcription of its direct target genes.

## 2. Correlation of expression values of DEGs with the frequency of EBSs in their promoters

As shown in Fig. 2C, the promoter of each DEG has a wide spectrum with respect to the number of EBS. To

examine whether the number of putative EBS in the promoters of DEGs is associated with expression levels of DEGs, fold changes of 60 down-regulated DEGs and the frequencies of EBSs on their promoters (~-2kb) were analyzed. Fig. 3 clearly showed that the frequency of putative EBSs on the promoter is not correlated with expression levels of DEGs. For example, *Frmd6* with more than 10 EBSs on its promoter had 1.5 fold changes and



**Fig. 3. Analysis for correlation of expression values of DEGs with the frequency of EBSs in their promoters.** The graphs in the upper part represent the frequency of EBSs in the promoter regions of 60 DEGs (genes which are down-regulated in uteri of OVX *Egr1*<sup>-/-</sup> mice 3 h after E<sub>2</sub> treatment). Right-angled black triangle in the bottom part represents spectrum of expression fold change of WT/KO from 1.5 to 3.4 fold.

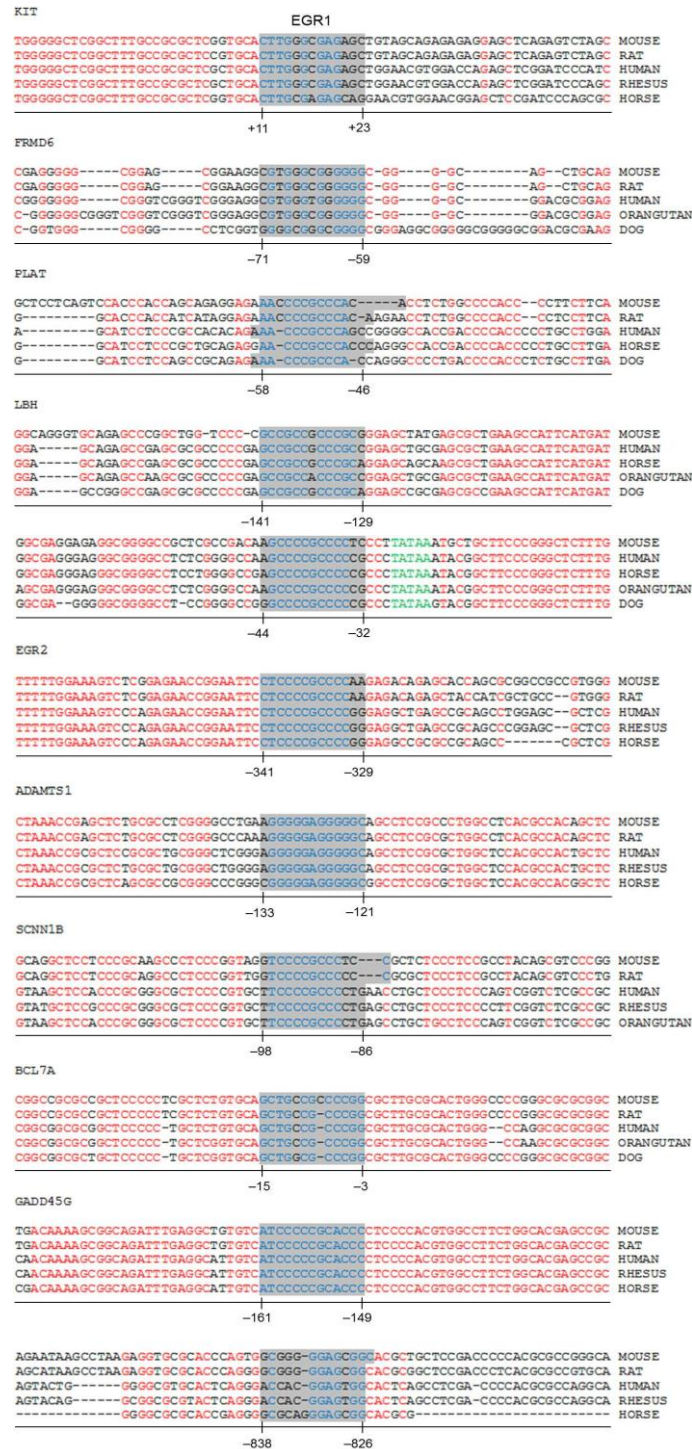
*Ddit4l* with only one EBS was the most down-regulated gene among DEGs.

### 3. Promoter analyses to examine sequence conservation of EBSs in the promoter region of DEGs

To efficiently identify biologically active EBS on the promoter of DEGs with bioinformatic tools, it has been examined whether the promoter sequences of DEGs were conserved between species. Promoter sequences of DEGs were collected from seven different species as much as their promoter sequences are available and analyzed by using Promo. *In silico* analyses with Promo provided that 11 EBS in 9 DEGs were highly conserved between species, among 276 EBS in the promoters of 102 DEGs (Fig. 4). Interestingly, 10 out of 11 highly conserved EBS were located within -0.5 kb of DEGs' promoters.

### 4. Validation of expression levels of DEGs with highly conserved EBS in their promoters

RT-PCR was performed to validate expression levels of DEGs with highly conserved EBS in their promoters. Among 9 genes whose promoters have been extensively investigated in this study, 7 genes were differentially expressed between uteri of OVX *Egr1*<sup>+/+</sup> and *Egr1*<sup>-/-</sup> mice (Fig. 5A). Real-time RT-PCR results showed that all 7 DEGs including *Lbh*, *Egr2*, *Kit* and *Adams-1* were significantly down-regulated in *Egr1*<sup>-/-</sup> uteri 3 h after estrogen treatment (Fig. 5B). A time-course expression profile of *Gadd45g* seems to be a replica of *Egr1*, suggesting that *Gadd45g* could be one of the target genes regulated by *Egr1* at transcriptional levels in the uterus. Collectively, these 7 DEGs could be considered as putative EGR1 direct target genes whose transcription is in part regulated by EGR1 in the uterus. Further studies will be focused on these genes to dissect out physical interaction(s) of EGR1 with EBS in the promoters of these DEGs in the uterus.



**Fig. 4.** Analyses for sequence conservation of EBS in the promoters of putative Egr1 direct target genes between 5 different species. Promoter regions of putative Egr1 direct target genes including EBS with adjacent sequences were aligned and compared between 5 species. The number indicates base pair location from transcription start site (TSS, +1). EBS was shown as shaded regions. Blue and red colored bases were conserved in all 5 species and green bases represents TATA box.

## DISCUSSION

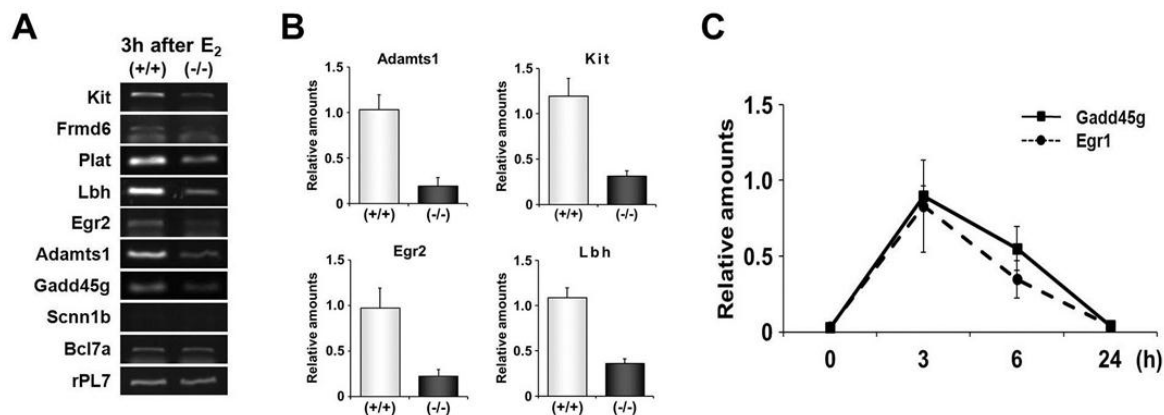
Egr1 is an immediate early response gene which orchestrates a second wave of expression as transcription factor in various biological events (Milbrandt, 1987; Thiel and Cibelli, 2002). Estrogen induces Egr1 via ERK1/2 dependent activation of ELK-1 in MCF-7 breast cancer cells (Chen et al., 2004). In addition, we have clearly demonstrated that estrogen induces Egr1 via nuclear estrogen receptor-ERK1/2 pathway (Kim et al., submitted). To understand function(s) of EGR1 as transcriptional regulator in various biological conditions, identification of target genes directly regulated by EGR1 at transcriptional levels is critical. However, there is no known gene(s) which is directly regulated by EGR1 at the transcription level in the uterus. Thus, we have performed two independent *in silico* analyses for a collection of mRNA microarray data to identify potential target genes whose transcription is directly regulated by EGR1 in the uterus.

Many genes have been identified as direct target of EGR1 in various tissues and pathological conditions including cancers (Svaren et al., 2000; Virolle et al., 2003). Initial works to identify direct target genes of EGR1 had performed mRNA microarray in various cancer cells overexpressing EGR1 or normal cells after adenoviral infection for its overexpression. For example, several growth factors involved in tumor progression such as insulin-like growth factor-II, platelet-derived growth factor-A, and TGF- $\beta$ 1 were known to be direct targets of EGR1 (Svaren et al., 2000). In addition, EGR1 is responsible for overexpression of cyclin D2 in DU145 prostate cancer cells (Virolle et al., 2003). However, to identify direct target genes that are biologically active in physiological condition(s), analyses of mRNA microarrays performed in an experimental condition such as overexpression are not as optimal as those performed with *in vivo* condition(s). Thus, *in silico* analyses for a set of genes collected from expression

profiles with a certain *in vivo* condition were performed to identify direct target genes of EGR1 in the uterus (Fig. 1). DEGs between uteri of Egr1(+/+) and Egr1(-/-) mice 3 h after estrogen treatment have potential to be transcriptionally regulated by EGR1 since Egr1 is rapidly and transiently induced within 2 h after estrogen treatment (Kim et al., submitted). As shown in Fig 2, DEGs have more number of putative EBS within -2 kb promoter sequences than in the promoter of randomly selected non-DEGs in general. A similar approach has been performed to identify EGR1 target genes in leiomyoma in a previous work (Ishikawa et al., 2007). They performed *in silico* analyses for finding putative EBS in the promoter of genes which are downregulated with Egr1 in leiomyoma, and demonstrated that 50 out of 135 listed genes possessed potential binding sites for EGR1 within 1 kb promoter sequence. In this study, different bioinformatic tools have been utilized to enhance efficiency to select EBS with higher probability for being biologically active in the uterus. MatInspector can be a useful method to provide most true positive transcription factor binding sites matches and reduce the amount of false positive matches in a promoter region, although not all sites found are necessarily functional in the particular biological context (Cartharius et al., 2005). By applying it, we were able to confirm that most of EBS are enriched within -500 bp promoter sequence. This result is consistent with a previous report that most EBS are enriched in -500 bp promoter region of EGR1 target genes in M12 prostate cancer cells (Arora et al., 2008). Promoters of MMP-9, P21, and GDNF have EGR1 consensus binding motifs within -500 bp (Choi et al., 2008; Shin et al., 2009). EGR1 consensus binding motifs were found within -500 bp of the LH- $\beta$  subunit promoter in many species (Lee et al., 1996).

Furthermore, another bioinformatic tool, Promo, was applied to perform comparative analyses for sequence conservation between several species whose promoter sequences are available (Messeguer et al., 2002). Since critical sequences





**Fig. 5. RT-PCR and real-time RT-PCR analyses to examine expression levels of DEGs with highly conserved EBS between various species in their promoters.** (A) Representative images of RT-PCR results to validate expression levels of 9 DEGs with highly conserved EBS in their promoter regions. Expression of 7 DEGs was significantly reduced in uteri of Egr1(-/-) mice. (B) Real-time RT-PCR analysis for relative amounts of mRNAs of 7 putative EGR1 target genes in the uterus. (C) Concordant expression patterns of Gadd45g with those of Egr1 in the uterus at several time points after estrogen treatment. Error bars represent standard deviation.

within the promoter such as transcription factor binding sites should be evolutionally conserved for transcription regulation, comparative analyses for sequence conservation between various species including human, mouse and rat, could improve efficiency to identify bio-logically active EBS in putative EGR1 target genes. Two-step *in silico* analyses with a collection of genes chosen from expression data provided 11 EBS within -500 bp promoter of 9 genes considered as Egr1 direct target with higher potential in the uterus (Figs. 2 and 4). Although SCNN1B is not expressed in the uterus and the expression pattern of BCL7A is not altered in Egr1(-/-) uteri, the other 7 genes with EBS in their promoters are significantly down-regulated in the uterus deficient of EGR1 (Fig. 5). Collectively, this study as well as previous works strongly suggests that these EBS, at least some, could physically interact with EGR1 in the uterus. Further studies such as chromatin immunoprecipitation (ChIP) and/or luciferase assays for EBS will be required to reinforce that these EBS are biologically active in the uterus. Recently, high-throughput screening technologies such as ChIP-sequencing or ChIP with promoter array (ChIP-chip) have been performed to identify unknown

direct target genes *in vitro* and *in vivo* (Tang et al., 2010; Koldamova et al., 2013). However, it is difficult to examine whether ChIP assay, a technically demanding experiment, is properly performed unless there is any known target(s) in the context of interest. Thus, experimental approaches performed in this study are useful to identify unknown target genes. In conclusion, two-step *in silico* analyses with expression profiles from mRNA microarray could provide a list of putative direct target genes of EGR1 in the uterus which does not have any known targets for further screenings such as ChIP-sequencing and ChIP-chip.

## ACKNOWLEDGEMENT

This work was supported by 2012 Research Grant from Kangwon National University.

## REFERENCES

Arora S, Wang Y, Jia Z, Vardar-Sengul S, Munawar A, Doctor KS, Birrer M, McClelland M, Adamson E, Mercola D (2008) Egr1 regulates the coordinated

- expression of numerous EGF receptor target genes as identified by ChIP-on-chip. *Genome Biology* 9:R166.
- Baron V, Adamson ED, Calogero A, Ragona G, Mercola D (2006) The transcription factor EGR1 is a direct regulator of multiple tumor suppressors including TGFbeta1, PTEN, p53, and fibronectin. *Cancer Gene Therapy* 13:115-124.
- Calogero A, Lombardi V, De Gregorio G, Porcellini A, Ucci S, Arcella A, Caruso R, Gagliardi FM, Gulino A, Lanzetta G, et al. (2004) Inhibition of cell growth by Egr-1 in human primary cultures from malignant glioma. *Cancer Cell International* 4:1.
- Cartharius K, Frech K, Grote K, Klocke B, Haltmeier M, Klingenhoff A, Frisch M, Bayerlein M, Werner T (2005) MatInspector and beyond: Promoter analysis based on transcription factor binding sites. *Bioinformatics* 21:2933-2942.
- Chen CC, Lee WR, Safe S (2004) Egr-1 is activated by 17beta-estradiol in MCF-7 cells by mitogen-activated protein kinase-dependent phosphorylation of ELK-1. *Journal of Cellular Biochemistry* 93:1063-1074.
- Choi BH, Kim CG, Bae YS, Lim Y, Lee YH, Shin SY (2008) P21 waf1/cip1 expression by curcumin in U-87MG human glioma cells: Role of Early growth response-1 expression. *Cancer Research* 68:1369-1377.
- de Mestre AM, Rao S, Hornby JR, Soe-Htwe T, Khachigian LM, Hulett MD (2005) Early growth response gene 1 (Egr1) regulates heparanase gene transcription in tumor cells. *The Journal of Biological Chemistry* 280:5136-5147.
- Duan WR, Ito M, Park Y, Maizels ET, Hunzicker-Dunn M, Jameson JL (2002) GnRH regulates early growth response protein 1 transcription through multiple promoter elements. *Molecular Endocrinology* 16:221-233.
- Ishikawa H, Shozu M, Okada M, Inukai M, Zhang B, Kato K, Kasai T, Inoue M (2007) Early growth response gene-1 plays a pivotal role in down-regulation of a cohort of genes in uterine leiomyoma. *Journal of Molecular Endocrinology* 39:333-341.
- Koldamova R, Schug J, Lefterova M, Cronican AA, Fitz NF, Davenport FA, Carter A, Castranio EL, Lefterov I (2013) Genome-wide approaches reveal Egr1-controlled regulatory networks associated with neurodegeneration. *Neurobiology of Disease* 63C:107-114.
- Lee SL, Sadovsky Y, Swirloff AH, Polish JA, Goda P, Gavrilina G, Milbrandt J (1996) Luteinizing hormone deficiency and female infertility in mice lacking the transcription factor NGFI-A (egr-1). *Science* 273:219-221.
- Messeguer X, Escudero R, Farre D, Nunez O, Martinez J, Alba MM (2002) Promo: Detection of known transcription regulatory elements using species-tailored searches. *Bioinformatics* 18:333-334.
- Milbrandt J (1987) A nerve growth factor-induced gene encodes a possible transcriptional regulatory factor. *Science* 238:797-799.
- Patwardhan S, Gashler A, Siegel MG, Chang LC, Joseph LJ, Shows TB, Le Beau MM, Sukhatme VP (1991) Egr3, a novel member of the Egr family of genes encoding immediate-early transcription factors. *Oncogene* 6:917-928.
- Reiss N, Llevi LN, Shacham S, Harris D, Seger R, Naor Z (1997) Mechanism of mitogen-activated protein kinase activation by gonadotropin-releasing hormone in the pituitary of alpha3-1 cell line: Differential roles of calcium and protein kinase C. *Endocrinology* 138:673-682.
- Saunders BD, Sabbagh E, Chin WW, Kaiser UB (1998) Differential use of signal transduction pathways in the gonadotropin-releasing hormone-mediated regulation of gonadotropin subunit gene expression. *Endocrinology* 139:1835-1843.
- Shin SY, Song H, Kim CG, Choi YK, Lee KS, Lee SJ, Lee HJ, Lim Y, Lee YH (2009) Egr-1 is necessary for fibroblast growth factor-2-induced transcriptional activation

of the glial cell line-derived neurotrophic factor in murine astrocytes. *The Journal of Biological Chemistry* 284:30583-30593.

Sundaresan S, Colin IM, Pestell RG, Jameson JL (1996) Stimulation of mitogen-activated protein kinase by gonadotropin-releasing hormone: Evidence for the involvement of protein kinase C. *Endocrinology* 137: 304-311.

Svaren J, Ehrig T, Abdulkadir SA, Ehrenguber MU, Watson MA, Milbrandt J (2000) Egr1 target genes in prostate carcinoma cells identified by microarray analysis. *The Journal of Biological Chemistry* 275:38524-38531.

Tang C, Shi X, Wang W, Zhou D, Tu J, Xie X, Ge Q, Xiao PF, Sun X, Lu Z (2010) Global analysis of *in vivo* Egr1-binding sites in erythroleukemia cell using chromatin immunoprecipitation and massively parallel sequencing. *Electrophoresis* 31:2936-2943.

Thiel G, Cibelli G (2002) Regulation of life and death by

the zinc finger transcription factor Egr-1. *Journal of Cellular Physiology* 193:287-292.

Topilko P, Schneider-Maunoury S, Levi G, Trembleau A, Gourdji D, Driancourt MA, Rao CV, Charnay P (1998) Multiple pituitary and ovarian defects in Krox-24 (NGFI-A, Egr-1)-targeted mice. *Molecular Endocrinology* 12:107-122.

Virolle T, Krones-Herzig A, Baron V, De Gregorio G, Adamson ED, Mercola D (2003) Egr1 promotes growth and survival of prostate cancer cells. Identification of novel Egr1 target genes. *The Journal of Biological Chemistry* 278:11802-11810.

Yoshino M, Mizutani T, Yamada K, Tsuchiya M, Minegishi T, Yazawa T, Kawata H, Sekiguchi T, Kajitani T, Miyamoto K (2002) Early growth response gene-1 regulates the expression of the rat luteinizing hormone receptor gene. *Biology of Reproduction* 66:1813-1819.