

Osteological Development of the Larvae and Juvenile of Trident Goby, *Tridentiger obscurus*

Seon-Yeong Hwang¹, Jae-Min Park², Sung-Hun Lee³, and †Kyeong-Ho Han³

¹Jeollanam-Do Ocean and Fisheries Science Institute, Yeosu 59713, Korea

²Gyeongsangbuk-Do Native Fish Business Center, Uiseong 37366, Korea

³Marine Technology Undergraduate, Chonnam National University, Yeosu 59626, Korea

ABSTRACT : This study is to observe the developmental process of the larval skeleton according to the growth of the trident goby, *Tridentiger obscurus* belonging to the larvae and juveniles and use it as the basic data of the taxonomic study. 8 days after hatching, the parasphenoid was ossified with an average total length of 3.62 mm, and basioccipital began to ossify. Caudal vertebrae and neural spine ossified in vertebra. 17 days after hatching, the average total length of the long hairs was 4.32 mm, pterotic and epiotic were ossified, and interhyal and subopercle were ossified. 52 days after hatching, the average total length of the juvenile was 18.2 mm, and lateral ethmoid, hypohyal ossified, vertebrae were parapophysis, and epural bone was osseous to the bone.

Key words : Juvenile, Larvae, Osteological, Trident goby, *Tridentiger obscurus*

INTRODUCTION

It is known that there are about 212 genera and 1,875 species of the fishes of Gobiidae are known to exist around the world, and in Korea about 27 genera and 74 species are reported (NIBR, 2011). Trident goby, *Tridentiger obscurus* belongs to Perciformes order, Gobiidae family, and *Tridentiger* genus, and lives fresh water and brackish water zone of eastern and western-southern coast of Korea, Han river, Geum river, Nakdong river, and Jeju Island (Kim et al., 2005). As for morphological characteristics, it has blunt mouth and tongue of short width, and jaws of the same length on both sides. Small teeth are arranged in two rows, the teeth of external rows are all composed of triangular

peaks except for 2–3 teeth in the back.

As for the researches on *Tridentiger obscurus*, there are researches on taxonomic research (Kim & Choi, 1989), taxonomic consideration (Kim & Yang, 1995), sucker structure (Kim et al., 2002), early life history (Hwang et al., 2006) and reproductive cycle (Jin et al., 2006). In Korea, there were researches on early life history of Gobiidae fishes such as *Chasmichthys dolichognathus* (Kim, 1975), *T. trigonocephalus* (Kim & Han, 1990), *Mugilogobius abei* (Kim & Han, 1991), *Favonigobius gymnauchen* (Jin et al., 2003), *L. grandis* (Yoon et al., 2008), but researches on skeletons of Gobiidae are conducted on *Chaenogobius laevis* (Kim & Han, 1989), *Periophthalmus modestus* (Lee, 1990), and *Luciogobius guttatus* (Kim et al., 1992) with a

Manuscript received June 11, 2018, Received in revised form July 15, 2018, Accepted August 7, 2018

† Corresponding Author : Kyeong Ho Han, Marine Technology Undergraduate, Chonnam National University, Yeosu 59626, Korea. Tel: +82-61-659-7163, Fax: +82-61-659-7169, E-mail: aqua05@jnu.ac.kr



This is an Open Access article distributed under the terms of the Creative Commons Attribution Non-Commercial License (<http://creativecommons.org/licenses/by-nc/3.0>) which permits unrestricted non-commercial use, distribution, and reproduction in any medium, provided the original work is properly cited.

few researches on skeletons.

When it comes to brood stock culture of fishes, researches on skeleton development of Larvae and juvenile are essential for identifying and removing skeleton abnormalities in the early stage of culture, and they can be an important data not only for development of species, but also of skeletal characteristics of adult fishes. Therefore, concrete and systematic researches are needed (Koumoundouros et al., 1997a,b). Therefore, in this study, we would like to observe the developmental process of the larvae and juvenile skeleton of the *T. obscurus* and use it as the basic data of the taxonomic study.

MATERIALS AND METHODS

1. Brood stock culture

For securing brood stock, was captured with a skimming net in the river estuary of Jeollanam-do, Yeosu-si Ocheon-dong. The total length of females is 6.3–7.0 (mean 6.64 ± 0.27 , $n=6$) cm, that of males is 7.2–8.0 (mean 7.63 ± 0.29 , $n=5$) cm. Brood stock was transported to a research room after being packed in a vinyl, and cultured in a glass square tank (35×50×30 cm) of a recirculation culture system.

2. Fertilized egg and larvae, Juvenile culture

Brood stock being cultured spawn eggs in a pipe made of PVC within tank, the temperature of the eggs was maintained at 18.4°C–23.2°C (mean 21.2°C), and the water was changed by more than 50% twice a day. For larvae and juvenile culture, salt concentration was maintained at 30.3–33.0 psu (mean 32.4 psu) and the temperature was the same as the management condition of the fertilized eggs. As for the feed, larvae of rotifer, *Brachionus rotundiformis* and *Artemia* sp. nauplius in consecutive order.

3. Skeleton strain

For observation of skeleton development of larvae, dur-

ing the period from incubation to juvenile, 10 fishes were randomly selected and fixed on neutral formalin of 5%. The fixed samples were double strained according to the method of Kawamura & Hosoya (1991). All-purpose projector (Nikon JP V-12B, Japan) and stereoscopic microscope (Nikon NM-40, Japan) were used to observe skull, jawbone, visceral skeleton, iliotibial bone and tailbone, and the size was measured to 0.01 mm. The name of each part was followed by Kim & Han (1989).

RESULTS

1. Cranium and pectoral girdle

Head skeleton of fishes is composed of cranium and visceral skeleton, pectoral girdle bone is jointed with base occipital bone of skull. In the operculum part, preopercle began to ossify (Tables 1–2), 8 days after hatching when ossification of the first skeleton was proceeded, preflexion larvae is 2.83–4.07 mm (mean 3.62 mm) ossification was conducted in parasphenoid of line shape on cranium. On the back, basioccipital began to ossify. Premaxillary and maxillary of upper jaw which function related to feeding ossified, and dentary of lower jaw ossified. In the part of tongue, epihyal ossified, and in the operculum, preopercle began to ossify, and in the pectoral girdle. clavicle began to ossify (Fig. 1A).

10 days after hatching, flexion larvae of the mid term is 3.83–4.43 mm of total length (mean 3.96 mm), and in the cranium exoccipital ossified, and hyomandibular ossified in palatal part. Opercle ossified in the operculum part, articular ossified in the lower jaw, and branchiostegal rays, ceratohyal and glossohyal began to ossified (Fig. 1B).

17 days after hatching, postflexion larvae of the latter period is 3.63–4.93 mm of total length (mean 4.32 mm), in the head bone, pterotic, epiotic, and frontal ossified, and interhyal in the tongue part ossified, subopercle ossified in the operculum, and angular ossified in the lower jaw (Fig. 1C).

Table 1. The ossification process of cranium and visceral skeleton in *Tridentiger obscurus*

Elements		Total length (mm), Days after hatching (dAH)						
		3.62 (8 dAH)	3.96 (10 dAH)	4.32 (17 dAH)	7.99 (28 dAH)	9.10 (38 dAH)	13.4 (45 dAH)	18.2 (52 dAH)
Cranium	Parasphenoid	■	■	■	■	■	■	■
	Prefrontal	■	■	■	■	■	■	■
	Pterotic	■	■	■	■	■	■	■
	Frontal	■	■	■	■	■	■	■
	Basioccipital	■	■	■	■	■	■	■
	Epiotic	■	■	■	■	■	■	■
	Exoccipital	■	■	■	■	■	■	■
	Nasal	■	■	■	■	■	■	■
	Supraoccipital	■	■	■	■	■	■	■
	Vomer	■	■	■	■	■	■	■
	Alisphenoid	■	■	■	■	■	■	■
	Sphenoid	■	■	■	■	■	■	■
	Prootic	■	■	■	■	■	■	■
	Lateral ethmoid	■	■	■	■	■	■	■
	Upper jaw	Maxillary	■	■	■	■	■	■
Premaxillary		■	■	■	■	■	■	■
Lower jaw	Dentary	■	■	■	■	■	■	■
	Articular	■	■	■	■	■	■	■
	Angular	■	■	■	■	■	■	■
Hyoid arch	Ceratohyal	■	■	■	■	■	■	■
	Epihyal	■	■	■	■	■	■	■
	Hypohyal	■	■	■	■	■	■	■
	Branchiostegal rays	■	■	■	■	■	■	■
	Glossohyal	■	■	■	■	■	■	■
	Interhyal	■	■	■	■	■	■	■
Palate	Hyomandibular	■	■	■	■	■	■	■
	Quadrate	■	■	■	■	■	■	■
	Metapterygoid	■	■	■	■	■	■	■
	Palatine	■	■	■	■	■	■	■
	Ectopterygoid	■	■	■	■	■	■	■
	Endopterygoid	■	■	■	■	■	■	■
Opercular	Opercle	■	■	■	■	■	■	■
	Preopercle	■	■	■	■	■	■	■
	Interopercle	■	■	■	■	■	■	■
	Subopercle	■	■	■	■	■	■	■

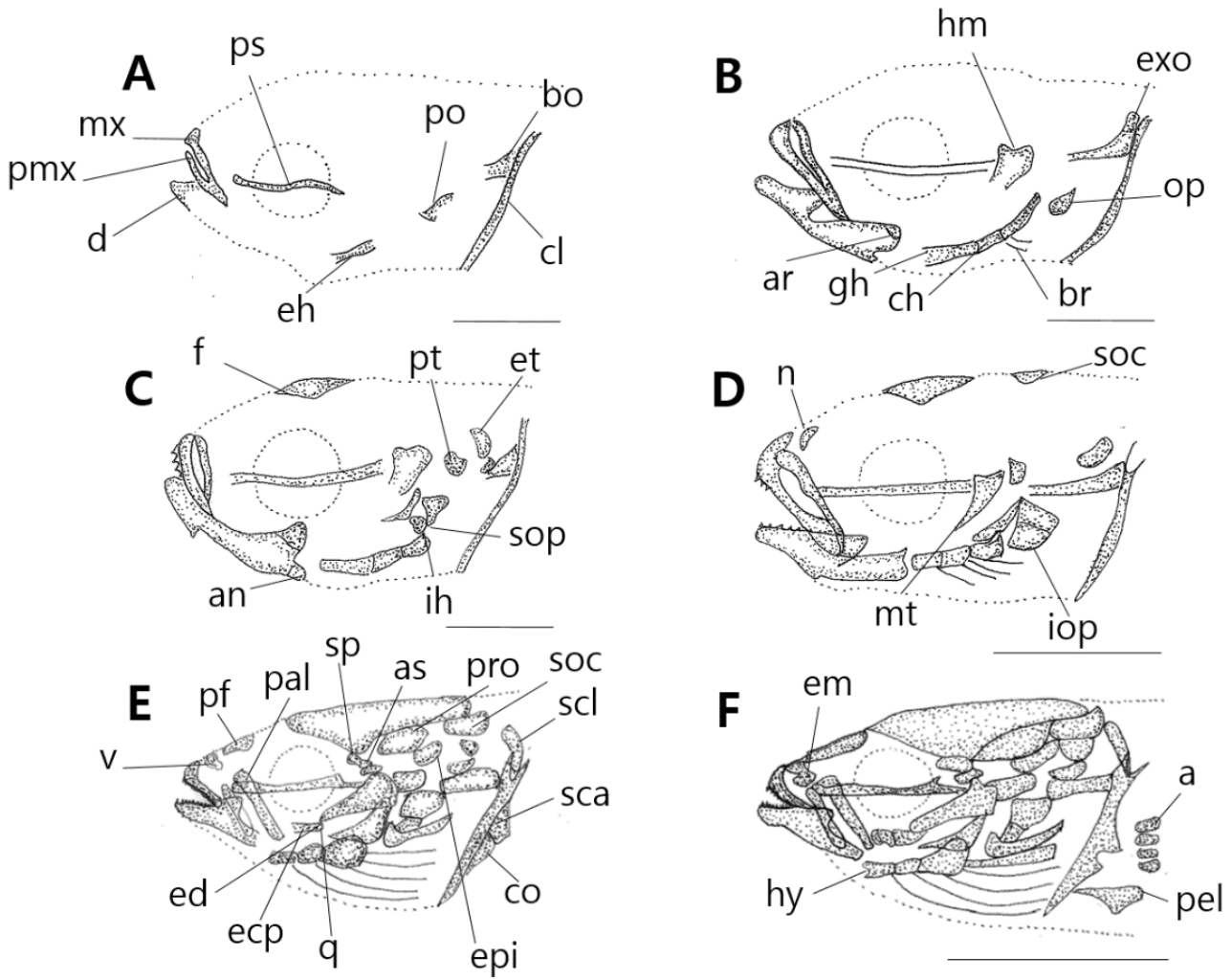


Fig. 1. Ossification of the cranium and visceral skeleton and shoulder girdle bone in *Tridentiger obscurus*. A, mean 3.62 mm in total length; B, mean 3.96 mm in TL; C, mean 4.32 mm in TL; D, mean 7.99 mm in TL; E, mean 9.10 mm in TL; F, mean 18.2 mm in TL. ar, articular; as, alisphenoid; a, actinost; an, angular; bo, basioccipital; br, branchiostegals; ch, ceratohyal; cl, clavicle; co, coracoid; d, dentary; ecp, ectopterygoid; ed, endopterygoid; eh, epihyal; epi, epiotic; et, epiotic; em, ethmoid; exo, exoccipital; f, frontal; gh, glossohyal; hy, hypohyal; hm, hyomandibular; ih, interhyal; mx, maxillary; n, nasal; soc, supraoccipital; iop, interopercle; mt, metapterygoid; op, opercle; pel, pelvic girdle; pt, pterotic; pf, prefrontal; pal, palatine; pmx, premaxillary; po, preopercle; pro, prootic; ps, parasphenoid; sca, scapular; scl, supraclavicle; soc, supraoccipital; sop, subopercle; sp, sphenotic; q, quadrate; v, vomer. Scale bars=0.5 mm.

28 days after hatching, postflexion larvae of hatch is 7.18–8.73 mm of total length (mean 7.99 mm). Nasal and supraoccipital ossified in the cranium, metapterygoid ossified in palate part, and interopercle ossified in the operculum part (Fig. 1D).

38 days after hatching, postflexion larvae of the latter

period is 8.03–10.0 mm of total length (mean 9.10 mm). Sphenoid, vomer, prootic, prefrontal and alisphenoid ossified in the cranium. Palatine, ectopterygoid, endopterygoid, and quadrate ossified, supraclavicle, scapula, and coracoid ossified in pectoral girdle (Fig. 1E).

52 days after hatching, juvenile is 16.6–19.2 mm of total

Table 2. The ossification process of vertebra and caudal skeleton and shoulder girdle bone in *Tridentiger obscurus*

Elements	Total length (mm), Days after hatching (dAH)						
	3.62 (8 dAH)	3.96 (10 dAH)	4.32 (17 dAH)	7.99 (28 dAH)	9.10 (38 dAH)	13.4 (45 dAH)	18.2 (52 dAH)
Vertebra	Neural spine						
	Abdominal vertebra						
	Hemal spine						
	Caudal vertebra						
	Interneural spine						
	Interhemal spine						
	Parapophysis						
	Notocord						
	Rib						
	Caudal bone	Parhypural					
Hypural bone							
Epural bone							
Urostyle							
Shoulder girdle bone	Clavicle						
	Supracleithrum						
	Scapula						
	Actinost						
	Coracoid						
	Pelvic girdle						

length (mean 18.2 mm). As lateral ethmoid ossifies in the cranium, hypohyal in the tongue part, actinost in the pectoral girdle, and pelvic girdle in the lower part, completing ossification of all skeletons.

2. Vertebrae and caudal skeleton

Vertebrae is the caudal skeleton of a body and protects spinal cords and blood vessels. Ossification direction of vertebrae proceeds from head to tail.

10 days after hatching, flexion larvae of the mid term is 3.83–4.43 mm (mean 3.96 mm) and is composed of notochord. Vertebrae’s ossification begins with 8 abdominal vertebrae on the front (Fig. 2A). 17 days after hatching, larva of the latter period is 3.63–4.93 mm (mean 4.32 mm), the number of abdominal vertebrae increases to 10, and 4 caudal vertebrae on the back begin to ossify (Fig. 2B).

28 days after hatching, postflexion larvae of the latter

term is 7.18–8.73 mm (mean 7.99 mm), stems of back, rear, tail fin form, and the number of caudal vertebrae increases to 15. During this period, the number of abdominal vertebrae is 10–11, the number of caudal vertebrae is 15–16, and a total of 25–27. The number of neural spine increases to 24, hemal spine to 14. As urostyle of tailbone curves by 45°, ossification begins (Fig. 2C).

38 days after hatching, postflexion larvae of the latter term is 8.03–10.0 mm (mean 9.10 mm) 3 interneural spines which support the second back fin ossify (Fig. 2D).

45 days after hatching, postflexion larvae of the latter term is 11.6–14.3 mm (mean 13.4 mm), and rib ossifies in the upper part of abdominal vertebrae. The number of the first back fin interneural spine increases to 6, the second back fin interneural spine to 10, and the interhemal spine supporting the back fin to 10. In the tail bone part, 3 hypural bones and 1 parhypural bone ossify (Fig. 2E).

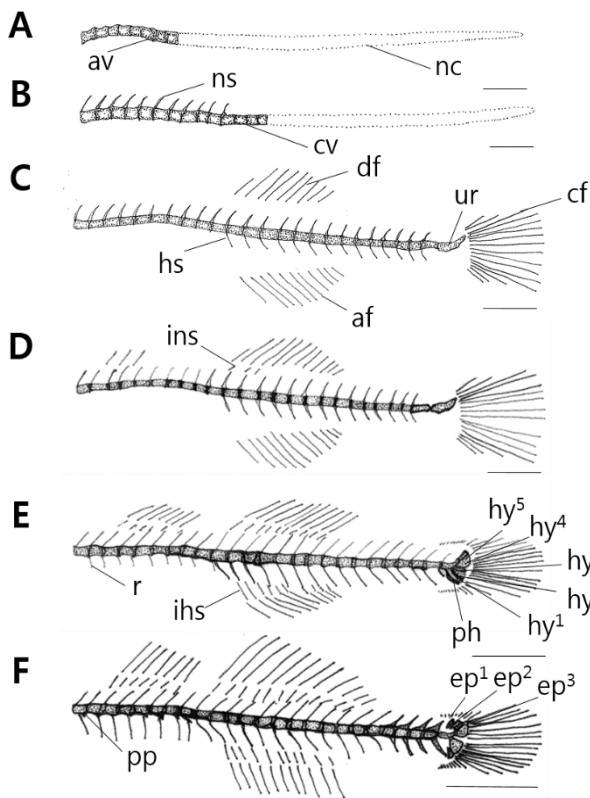


Fig. 2. Ossification of the cranium and visceral skeleton and shoulder girdle bone in *Tridentiger obscurus*.

A, mean 3.96 mm in total length; B, mean 4.32 mm in TL; C, mean 7.99 mm in TL; D, mean 9.10 mm in TL; E, mean 13.4 mm in TL; F, mean 18.2 mm in TL. af, anal fin; av, abdominal vertebrae; cf, caudal fin; cv, caudal vertebrae; df, dorsal fin; ep, epural bone; hs, hemal spine; hy, hypural bone; ihs, interheamal spine; ins, inter neural spine; r, rib; ph, parhypural bone; pp, parapophysis; nc, notochord; ns, neural spine; ur, urostyle. Scale bars=1.0 mm.

52 days after hatching, juvenile of the latter term is 16.6–19.2 mm (mean 18.2 mm). In the lower part of abdominal vertebrae, parapophysis ossifies, in the upper part of urostyle, 3 epural bones ossify. As the number of hypural bone increases to 5, the ossification of vertebrae and tail bones becomes completed.

DISCUSSION

Tridentiger obscurus showed no skeletal development

right after hatch. From the time when the total length is 3.62 mm after hatch, maxillary, premaxillary, and preopercle which play the role of feeding and respiration first ossified. In the skull, parasphenoid and basioccipital begin to ossify. This skeletal development was similarly seen in *Luciogobius guttatus* (Kim et al., 1992) and *Chaenogobius laevis* (Kim & Han, 1989). As the mouth and swimming ability develop, clavicle of pectoral girdle develops. On the 8 days after hatching, *Tridentiger obscurus* shows ossification of clavicle when it is 3.62 mm of the total length, consecutively on the 38 days after hatching, supracleithrum, scapula, and coracoid ossify and it is 9.10 mm long.

Chaenogobius laevis of the same Gobiidae family shows the first ossification of clavicle on the 13 days after hatching, on the 17 days after hatching, supracleithrum ossifies, and on the 43 days after hatching actinost ossifies, completing ossification of pectoral girdle (Kim & Han, 1989). *Tridentiger obscurus* completed ossification of pectoral girdle among comparative species. Clavicle first ossifies, and actinost lastly ossifies in the same way.

Vertebrae is the central skeleton of a body. Ossification direction of vertebrae proceeds from head to tail consecutively. As abdominal vertebrae ossifies, interneural spine begins to ossify in the upper part. As tail bones ossify, hemal spine ossifies. *Chaenogobius laevis* of the same Gobiidae family showed similar ossification to *Tridentiger obscurus*. However, vertebrae ossified before the completion of ossification of urostyle, showing different ossification from *Tridentiger obscurus* and similar to ossification process of *Luciogobius guttatus* (Kim et al., 1992) and *Chaenogobius laevis* (Kim & Han, 1989).

Pterygiophore which supports fins ossified from the front to the back. *Tridentiger obscurus* and *Chaenogobius laevis* (Kim & Han, 1989), *Luciogobius guttatus* (Kim et al., 1992) developed the second back fin at the time when interneural spine ossified, showing the same development.

Research results suggest that development is the same as the feeding and respiration functions first develop among

similar species. *Tridentiger obscurus* completed ossification the fastest of clavicle among similar species. Vertebrae ossified the same way as urostyle, but *Chaenogobius laevis* (Kim & Han, 1989) and *Luciogobius guttatus* (Kim et al., 1992) showed differences in development as vertebrae ossified before the ossification of urostyle.

Researches on skeletal development can be an important data for analyzing official phenomenon and malformation development among carnivorous fish. Gobiidae fish are not main species for culture, but the characteristics shown in the skeletal development process can be used as taxonomy database. These researches are thought to serve as an important research for classifying similar species.

REFERENCES

- Hwang SW, Lee WK, Yoon SM, Kim CC, Lee SH, Seo WI, Roh SS, Han KH (2006) Early life history of the *Tridentiger obscurus* (Pisces, Gobiidae). *Dev Reprod* 10: 47-54.
- Jin DS, Han KH, Park JW (2003) Spawning behavior and morphological development of larvae and juvenile of the naked-head goby, *Favonigobius gymnauchen* (Bleeker). *J Korean Fish Soc* 36:136-143.
- Jin YS, Park CB, Kim HJ, Lee CH, Song YB, Kim BH, Lee YD (2006) Reproductive cycle of dusky tripletooth goby *Tridentiger obscurus* in Jeju island, Korea. *Korean J Ichthyol* 18:184-192.
- Kawamura K, Hosoya K (1991) A modified double staining technique marking a transparent fish-skeletal. *Bull Nat Res Inst Aquacult* 20:11-18.
- Kim IS, Choi Y (1989) A taxonomic study of goby, the Genus *Tridentiger* (Gobiidae, Pisces) from Korea. *J Fish Aquat Sci* 22:59-69.
- Kim IS, Choi Y, Lee CL, Lee YJ, Kim BJ, Kim JH (2005) Illustrated Book of Korean Fishes. Kyo Hak Publishing, Seoul, Korea, pp 420-443.
- Kim JB, Yang SY (1995) Taxonomic study on two species in the Genus *Tridentiger* (Pisces: Perciformes: Gobiidae). *Korean J Syst Zool* 11:359-377.
- Kim TY, Son SW, Choi BJ, Park CH (2002) A study of structure of the sucker of common freshwater goby (*Rhinogobius brunneus*) and trident goby (*Tridentiger brevispinis*). *Korean J Elec Micro* 32:57-66.
- Kim YU (1975) On the morphology of larval and young stages of *Chasmichthys dolichognathus*. *J Korean Fish Soc* 8:225-223.
- Kim YU, Han KH (1989) Early life history of the marine animals 1. Egg development, larvae and juveniles of *Chaenogobius laevis* (Steindachner). *J Korean Fish Soc* 22:317-331.
- Kim YU, Han KH (1990) Early life history and spawning behavior of the gobiid fish, *Tridentiger trigonocephalus* (Gill) reared in the laboratory. *Korean J Ichthyol* 2:53-62.
- Kim YU, Han KH (1991) Early life history and spawning behavior of the gobiidae fish, *Mugilogobius abei* (Jordan et Snyder) reared in the laboratory. *Korean J Ichthyol* 3:1-10.
- Kim YU, Han KH, Kang CB, Ryu JW (1992) Early life history and spawning behavior of the gobiid fish, *Luciogobius guttatus* Gill. *Korean J Ichthyol* 4:1-13.
- Koumoundouros G, Gagliardi F, Divanach P, Boglione C, Cataudella S, Kentouri M (1997a) Normal and abnormal osteological development of caudal fin in *Sparus aurata* L. fry. *Aquaculture* 149:215-226.
- Koumoundouros G, Oran G, Divanach P, Stefanakis S, Kentouri M (1997b) The opercular complex deformity in intensive gilthead sea bream (*Spartus aurata* L.) larviculture. Moment of apparition and description. *Aquaculture* 156:165-177.
- Lee CL (1990) Osteological study of the mudhopper, *Periosthalmus cantonensis* (Perciformes, Gobiidae) from Korea. *Korean J Zool* 33:402-410.
- NIBR (National Institute of Biological Resources) (2011) National List of Species of Korea (Vertebrates). Na-

tional Institute of Biological Resources, pp 151-160.
Yoon SM, Han KH, Lee SH, Yim HS, Hwang JH, Yeon IH,
Kim YC (2008) Embryonic and larva development of

nake-headed goby, *Luciogobius grandis*. Dev Reprod
12:133-139.